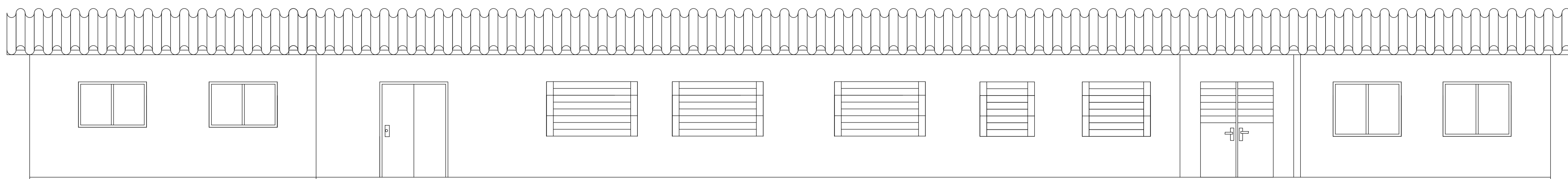
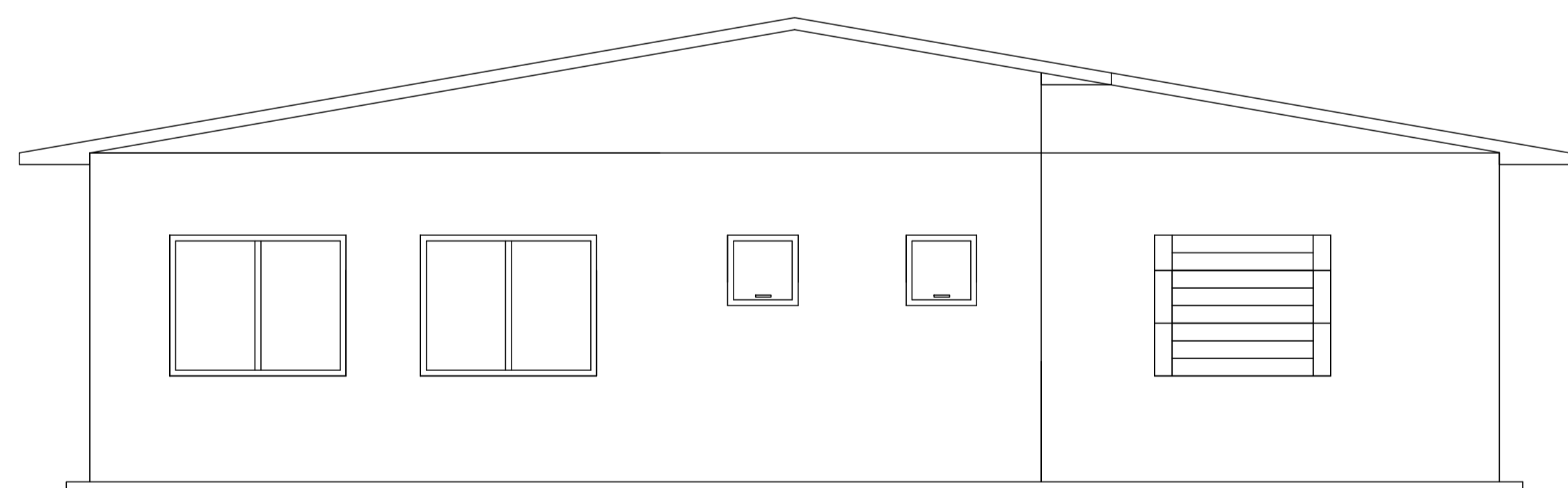


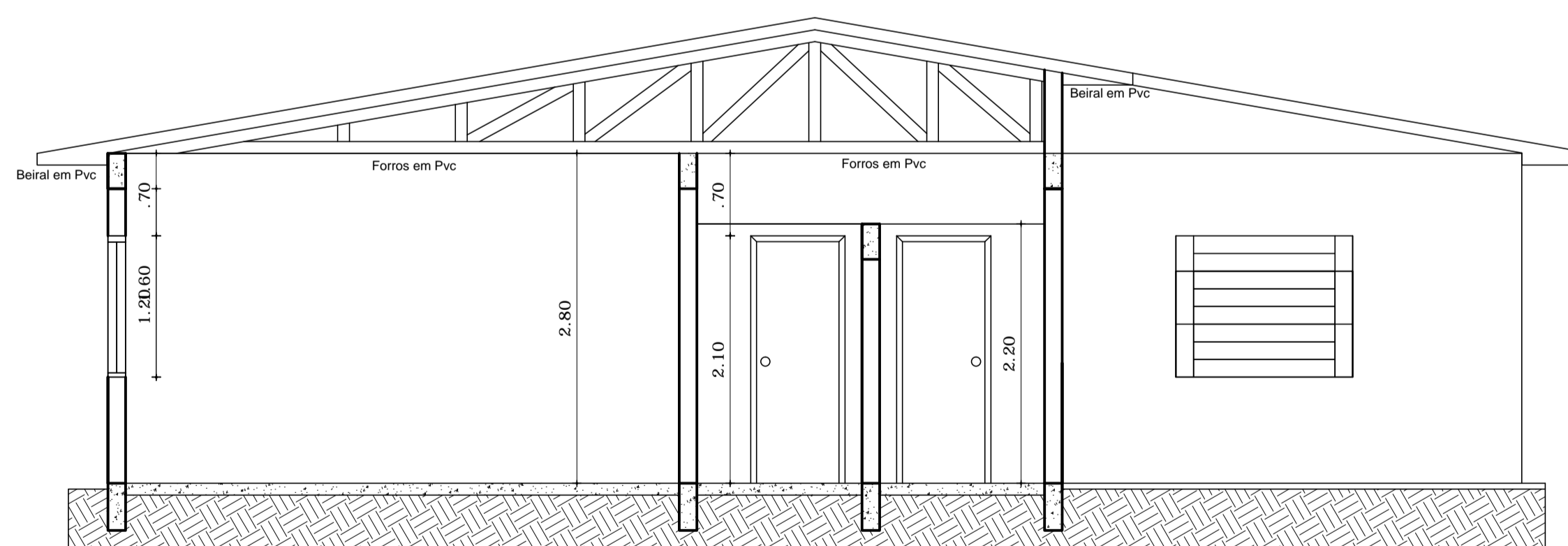
CORTE B-B'
ESC: 1/50



FACHADA OESTE
ESC: 1/50



FACHADA SUL
ESC: 1/50



CORTE A-A'
ESC: 1/50

	<p>PREFEITURA MUNICIPAL DE AJURICABA Rua Oscar Schmidt, 172, Centro</p>		
	<p>Projeto: Reforma e Ampliação da Creche Raio de Sol</p>		
<p>Resp. Técnico: Eng. Civil Gilmar Antonio Marquezin CREA/RS: 66.403</p>			
<p>Prancha: 02/05</p>	<p>Planta Arquitetônico</p>	<p>Área total: 388,93 m²</p>	<p>Data: Set/21</p>
		<p>Desenho: Roger B.</p>	