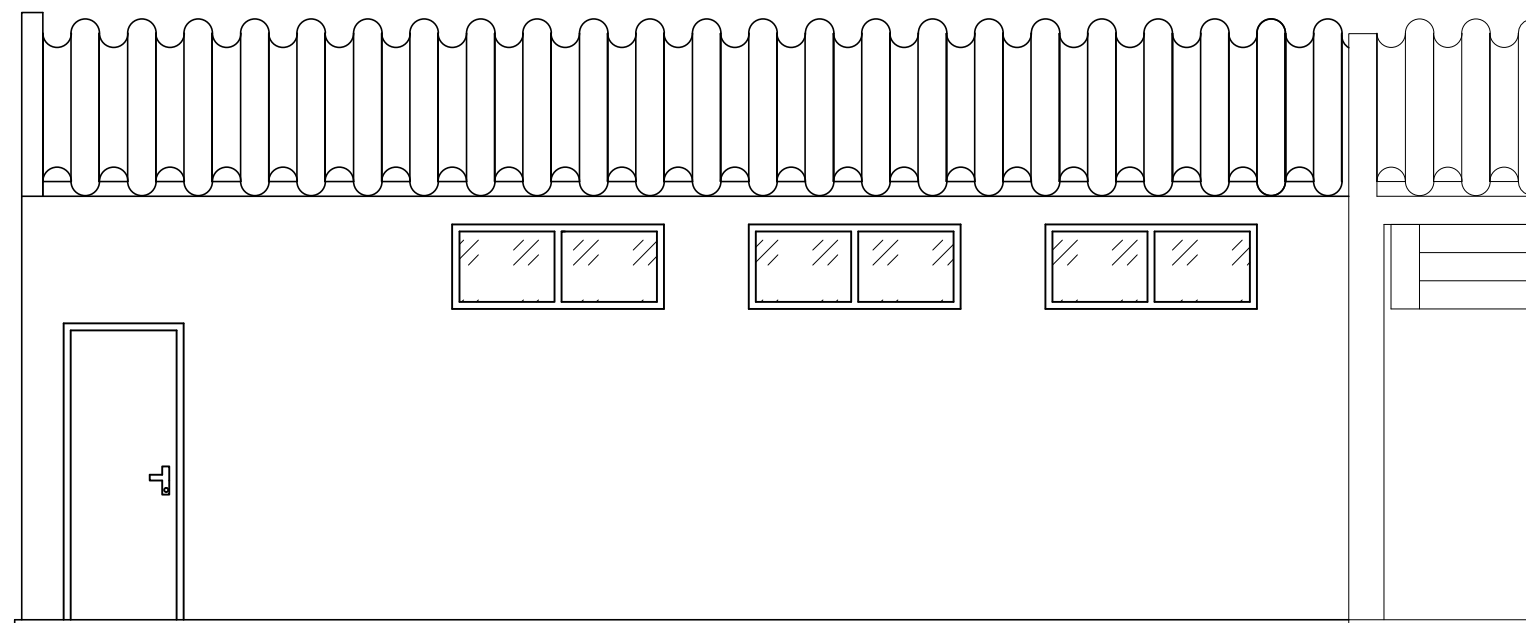
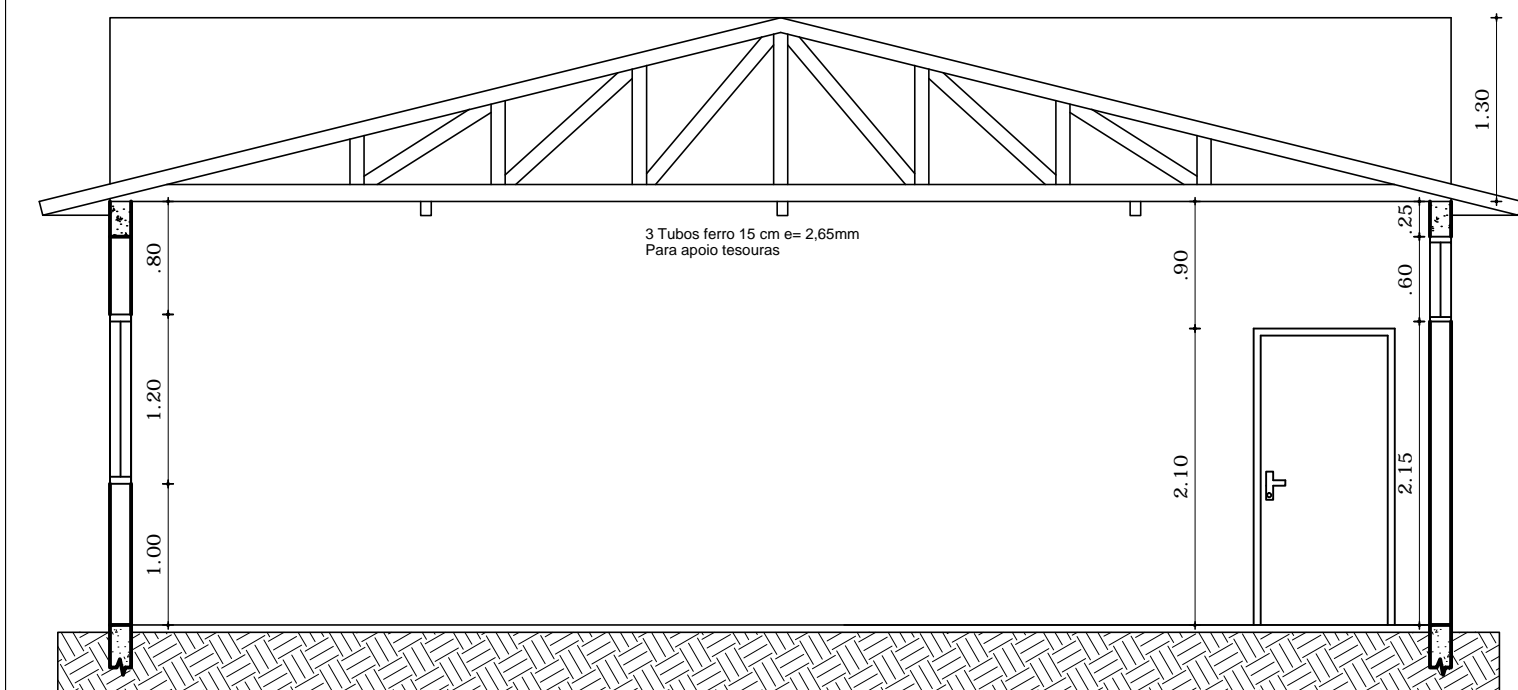


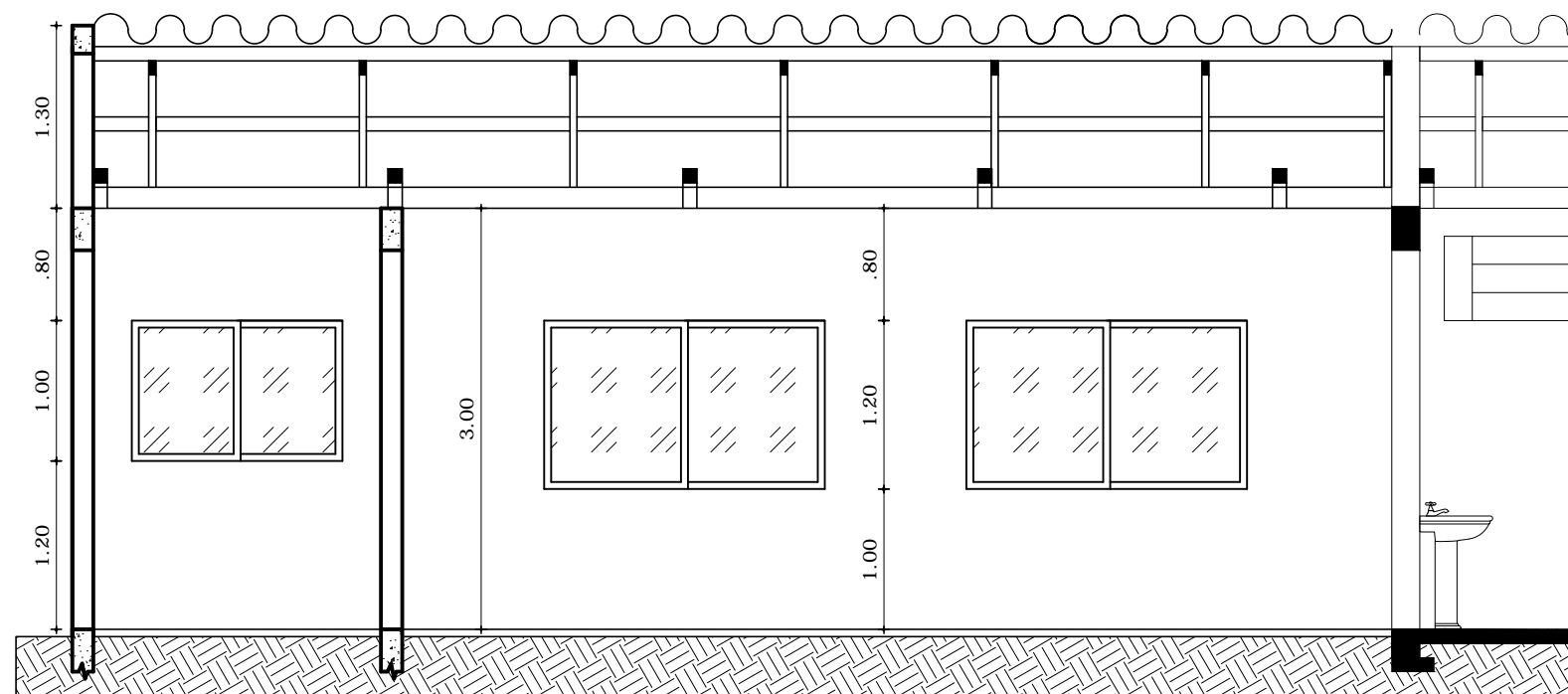
FACHADA LATERAL  
Esc: 1/50




FACHADA FRONTAL  
Esc: 1/50



CORTE B-B'  
Esc: 1/50



CORTE A-A'  
Esc: 1/50

	<b>PREFEITURA MUNICIPAL DE AJURICABA</b> Rua Oscar Schimidt, 172, Centro			
	Projeto: Ampliação E.M.E.F. Nelci Tobias Oedmann			
Resp. Técnico:  Eng. Civil Gilmar Antonio Marquezin CREA/RS: 66.403				
Prancha: 02/08	Cortes e Fachadas	Área total: 77,60 m <sup>2</sup>	Data: Set/21	Desenho: Roger B.